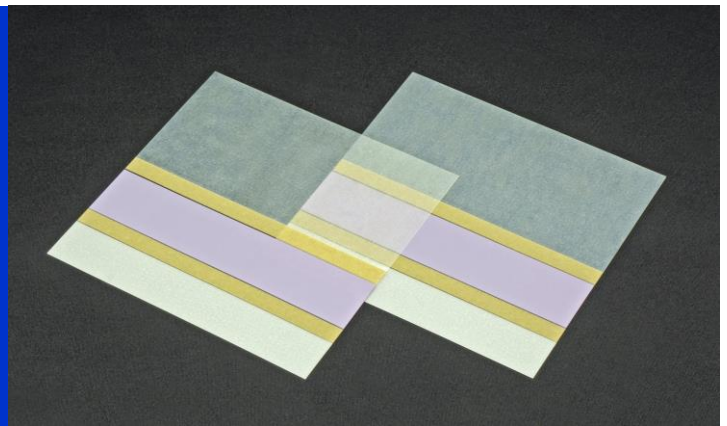


**Through batch process polishing,
automated optical connector polishing
with a single polishing machine.**

Batch Process Polishing Film

MC-Film

MC-Film is a polishing film that can do batch processing from the resin removal up until the final polishing by utilizing the ATP-3000 polishing machine's unique linear motion polishing method that doesn't require conventional multi-stage polishing processes.



Automated polishing with one machine!

In conventional automated polishing lines, the same number of polishing machines as the polishing processes was needed. However, by combining the unique polishing trajectory of the ATP-3000 and the MC-Film placed in a direct line from adhesive removal until final finishing, we have realized in a single polishing machine.

Save time and Space

Since changing polishing film and cleaning operations between processes are not needed, there is a measured shortening in polishing time. Also, because automation can be done with a single polishing machine, space is also saved.

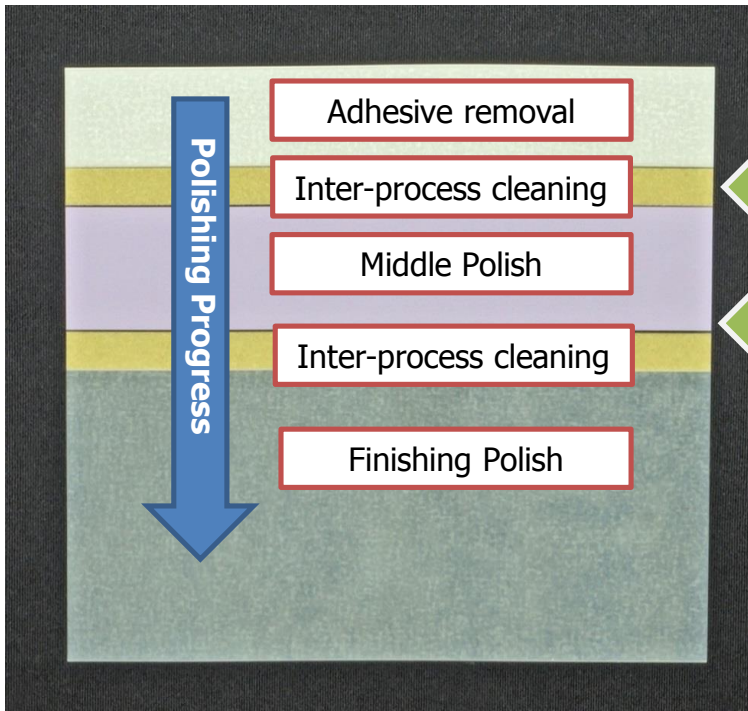
"Skill less" operation

The cleaning work and attaching and detaching of polishing films normally required between processes that can easily affect the polish shape and cause end face scratching are no longer needed, achieving a workability with no special skills required.

Specifications

Type	MC-Film Batch Process Polishing Film
Standard Sizes	Square type: 140mm (5.5inch) × 140mm(5.5inch) (100 sheets/set)
Abrasive Grain	WA 9μm, Diamond 1μm, Silica (ADS-NEXT)
Applicable Connector	SC/UPC, FC/UPC, LC/UPC (Under development : MPO/PC, MPO/APC, SC/APC)

■ Batch Process Polishing Film Configuration Example (SC/PC Use)

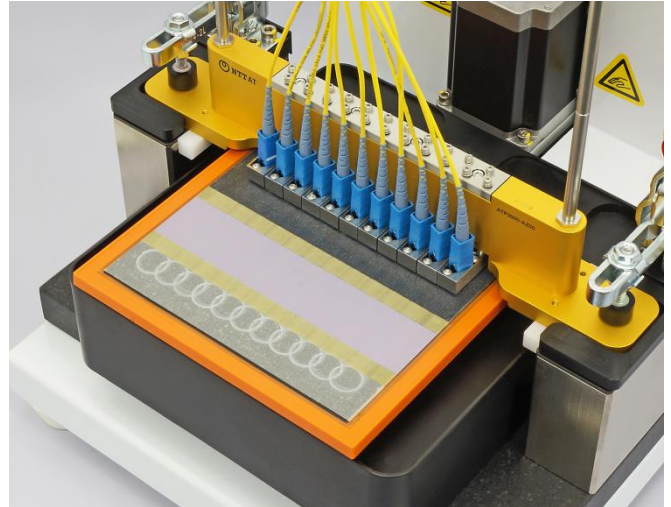
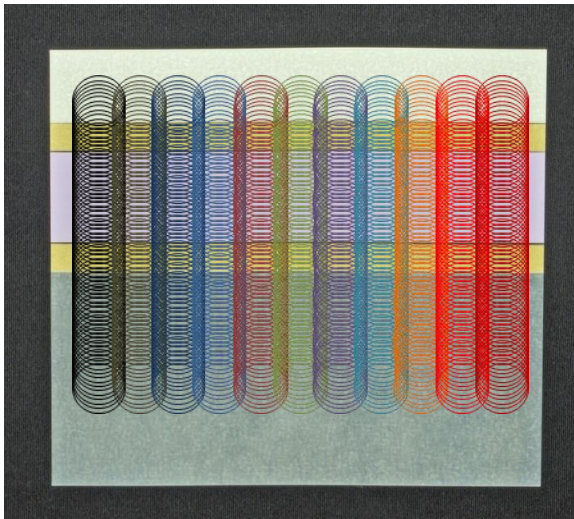


By placing a buff film between each of the polishing films, the polishing and inter-process cleaning are done at one time as a batch.

Starting the polishing from the adhesive removal zone shown at the illustration to the left, it passes through the standard film zone for each polishing process, completing the polishing at the final finish polish zone.

Enabling everything from adhesive removal to the finish polishing to be done in one step by putting together all the necessary films for all polishing in one polishing film. Customizing is available for various type of ferrule.

■ The polishing trajectory only possible with the ATP-3000



※ All company names, product names, etc., indicated herein are trademarks or registered trademarks of each respective company.
※ Please understand that all comments and data recorded herein may be subject to change without prior notification.

For more information

http://www.ntt-at.com/product/Polishing_film/



NTT Advanced Technology Corporation

Optical Products Business Unit

NTT Musashino R&D Center, 3-9-11, Midori-cho, Musashino-shi, Tokyo, 180-0012, Japan

TEL: +81 422 39 8934, FAX: + 81 422 39 8935